



1. Infrastructure working group

The focus of this working group is on issues such as:

- Managing point source discharge from industry and Environmentally Relevant Activities
- Water supply & Water treatment
- Sewage Treatment Plants & recycled water use
- Stormwater (Gross pollutant traps/wetlands)
- Management of rivers, creeks & wetlands
- Groundwater recharge & use



2. Community Education Involvement and Monitoring Working Group

- Includes public catchments tours of 'Creek to Coral' including visits to wetland areas, sewage treatment plants, Douglas Water Treatment Plant, Ross River Dam etc.
- Displays at annual events such as Ecofiesta, The Wetlands Festival and the River Festival
- Reef Guardian Schools partnerships and support for GBRMPA's Reef Beat Series 
- Calendars, fliers and poster production relating to total water cycle management
- Beach and River clean-ups such as Clean-up Australia Day
- Supporting local marine and freshwater community groups with Envirofund applications such as Seagrass Watch & Reef Check



3. Water Quality Monitoring and Research Working Group

An aim of this working group is to firstly establish a baseline report of existing monitoring and research that impacts on wetlands and waterways in the Townsville/Thuringowa local government areas.

Our catchment care ultimately affects the fringing coral reefs and seagrasses of the Great Barrier Reef World Heritage Area. Let's keep it great.



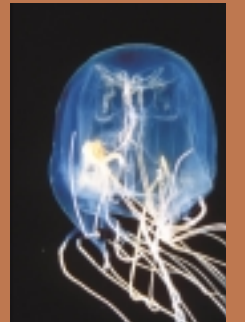
Federal, State and local government, industry, science and community are all partners and involved in the Creek to Coral water quality monitoring working group in varying degrees.



4. Environmental Protection and Emergency Response Working Group

The focus of this working group is on issues such as:

- Annual compliance programs developed with consideration given to proactive industry inspections within the Creek to Coral region
- Government agencies and other relevant stakeholders continue to improve communication and procedures in dealing with emergency incidents
- Integrate procedures where possible for addressing issues such as algal outbreaks, fish kills, oil spills (land & sea), acid sulphate soils, marine jellyfish monitoring and threatened species protection (e.g. sea turtles & dugongs)



Ways you can contribute

- Join a local community group who monitor freshwater or marine ecosystem health such as Creek Watch, Seagrass Watch or Reef Check
- Prevent soil, leaves, cut grass and dog litter from being washed into the streets and down the drains
- Never litter & make sure you dispose of all cigarette butts wisely to reduce pollution.
- Use alternatives to plastic bags such as calico bags to reduce marine plastics pollution
- Become aware of the way water flows in our catchments

Copyright: Moreton Bay Waterways and Catchment Partnership

Waterflow in the catchment



Creek to Coral is a communications network and branding which serves a coordinating role for total water cycle management in the Townsville and Thuringowa local government regions.



Objectives include

- Ensuring sustainable management of storm water, ground water and effluent
- Focussing on the benefits of total water cycle management including use of recycled water
- Reduce Nutrient loads (phosphorous and nitrogen) discharging from Sewage Treatment Plants by 2008.
- Viewing the coastal marine environment as a biophysical indicator of our effectiveness in managing terrestrial waterways and wetlands.
- Identifying waterway health indicators & developing a score card system to access ecosystem health and water quality.
- Informing, educating, and involving community based stewardship, awareness and ownership of catchment and wetland issues (including recreational use)



Federal, state & local government, industry, science and community stakeholders are all partners and involved in varying degrees. The program consists of a Board including the Mayors of the twin cities, the Executive Director of the EPA and GBRMPA. The board is supported by a Project Control Group, Environmental Management Reference Group and Four working groups.

For further Creek to Coral information please contact:
The Coordinator Creek to Coral
C/o PO Box 126, Townsville 4810

Ph: 47279519
Fax: 47279315
Email: creektocoral@townsville.qld.gov.au

www.soe-townsville.org/creektocoral/

Copyright 2004 Creek to Coral
Printed on recycled paper Photos courtesy of GBRMPA, NQ Water, TCC, CVA and DPI&F

The Creek to Coral project is about the sustainable use and management of our coastal marine and freshwater environments.

The Creek to Coral focus is on local concerns and issues in an environmental context that is relevant to the Townsville & Thuringowa dry tropics adjacent to the Great Barrier Reef.

Creek to Coral's structure includes 4 working groups:

1. Infrastructure Working Group
2. Community Education Involvement and Monitoring Working Group
3. Water Quality Monitoring and Research Working Group
4. Environmental Protection and Emergency Response Working Group